

Historic, Archive Document


Do not assume content reflects current scientific knowledge, policies, or practices.

62.09

1952

LIBRARY RECEIVED
★ JAN 3 1952 ★
U. S. Department of Agriculture

cable address FLOHAWA

The Regal Line 

FLOWERS OF HAWAII LTD.

670 SO. LAFAYETTE PARK PLACE - LOS ANGELES 5, CALIFORNIA - DU 8-5106

HAWAIIAN VANDA ORCHIDS FOR PROMOTIONS



A. SINGLE ORCHID CORSAGES

- 1. Plain: Stem wrapped in moist cotton.....09
- 2. Foil Dressed: Stem in metallic foil holder.....10
- 3. Flora-Dressed: Stems wired and taped.....12
- 4. Lapel Vial Pin: Stems in plastic vial pin.....15
*Above styles packed 100 to a carton
- 5. Single Orchids, all above styles, available in Kliklok boxes for 2¢ additional. Packed 75 to a carton.

B. DOUBLE ORCHID CORSAGES

- 1. Foil Holder.....16
- 2. Flora-Dressed.....18
*Above packed 40 to a carton

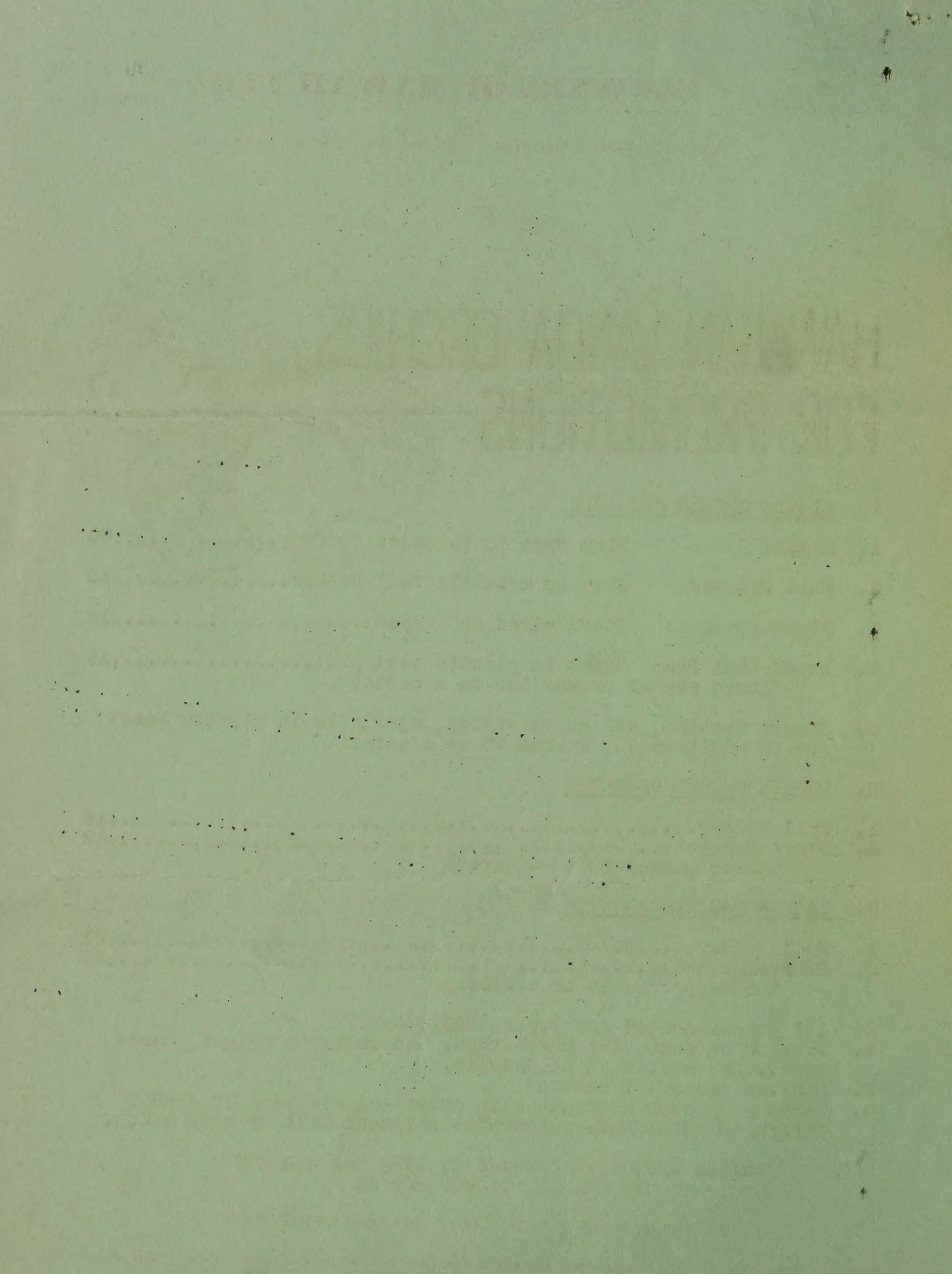
C. TRIPLE ORCHID CORSAGES

- 1. Foil Holder.....21
- 2. Flora-Dressed.....25
*Above packed 16 to a carton

- D. All prices quoted are F.O.B. WEST COAST
- E. Packing at cost, 25¢ per carton. Approximate weight, three pounds per carton in all styles.
- F. Minimum order - 1 carton
- G. TERMS - 3% cash discount with order - 1%-10 days if credit reference furnished. Otherwise shipment will be made C.O.D.

PRICES EFFECTIVE JANUARY 1, 1952 AND SUBJECT TO CHANGE WITHOUT NOTICE

 GENERAL OFFICES: P. O. 1145 • HILO, T. H. • CABLE ADDRESS "FLOHILO"



FLOWERS OF HAWAII, Ltd.

HAS MOVED

◆ ◆ New Address: 670 South Lafayette Park Place
Los Angeles 5, California

◆ Same Telephone: DUnkirk 8-5106

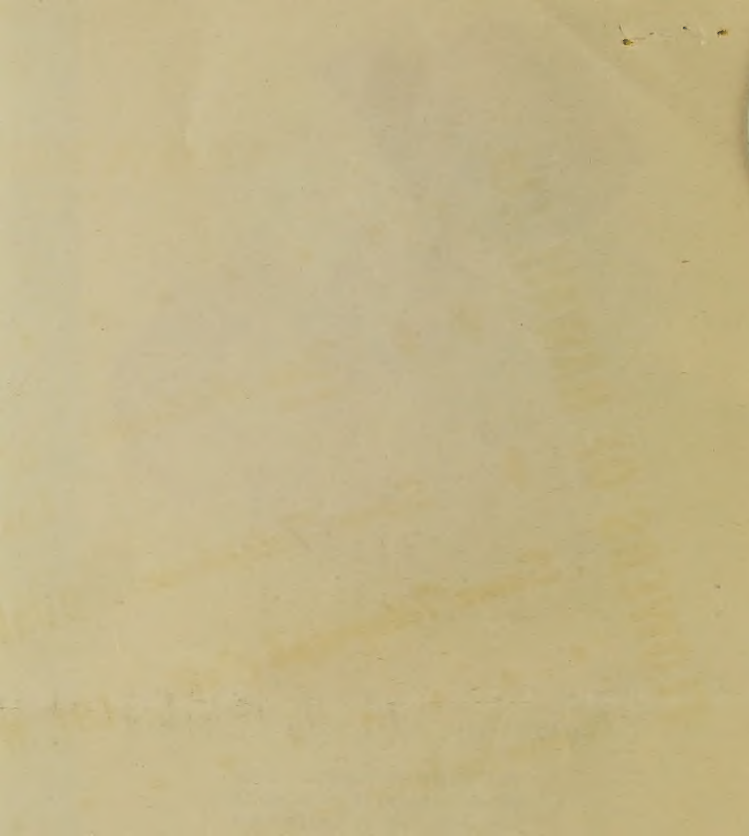
Same Telegraph Call: CDT, WUX, Los Angeles

To serve you better, we have moved our sales office to new enlarged quarters!



Hawaiian Vanda Orchid

FLOWERS OF HAWAII, LTD.
670 S. LAFAYETTE PARK PLACE
LOS ANGELES 5, CALIFORNIA



SPECIAL NOTE: Other styles of corsages available upon request. Ribbon bows may be added at an additional charge of 2¢ per orchid.

SPECIAL SHIPPING NOTES: Shipments forwarded by air freight, air express, or airmail, scheduled to arrive at your establishment the day prior to use, though many customers prefer to pick up their shipment at the nearest commercial airport. If specified, we will send a night letter collect when shipment leaves West Coast giving flight information.

SPECIAL STORAGE NOTES: Open boxes and inspect Orchids upon arrival. After inspection, close boxes and place in refrigeration at temperature between 40 - 55°, keep away from freezing unit. Any variation in arrival date or condition of Orchids must be reported to shipper immediately, accompanied by carrier inspection report and empty corsage holders to substantiate claim.

SPECIAL ORDERING NOTES: Write in for quantity discount. Orchids are available throughout the year. Ten days' notice on all orders necessary for assurance of arrival on time and in perfect condition. Orders on less than ten days notice taken subject to delay at buyer's risk.

SPECIAL PROMOTIONS: From time to time, during peak production, special prices or special "packaged" promotions may be offered. These will be nationally advertised in trade papers. WATCH FOR THEM.

GUARANTEE: We guarantee arrival of Orchids in good condition, and to deliver shipment to carrier in time for specified arrivals.

